



# DEVELOPMENT LAND WITH OLD FARM HOUSE

## 11209 E. Bannister Road, Kansas City, Missouri



# SALE PRICE: \$385,000 | 19.2+/- ACRES

### DEMOGRAPHICS

	1 mile	3 miles	5 miles
Estimated Population	1,578	40,644	118,198
Avg. Household Income	\$110,864	\$99,180	\$93,761

- Great South Kansas City Location
- Just East of View High Drive on Bannister Road
- Near Paragon Star Development
- Great development site with all utilities available
- Land Use Code: AG Homesite



CLICK HERE TO VIEW MORE  
LISTING INFORMATION

For More Information Contact:

**BOB JAEKEL** | 816.412.7365 | [bjaekel@blockandco.com](mailto:bjaekel@blockandco.com)

*Exclusive Agent*





# DEVELOPMENT LAND WITH OLD FARM HOUSE

11209 E. Bannister Road, Kansas City, Missouri

## PHOTOS



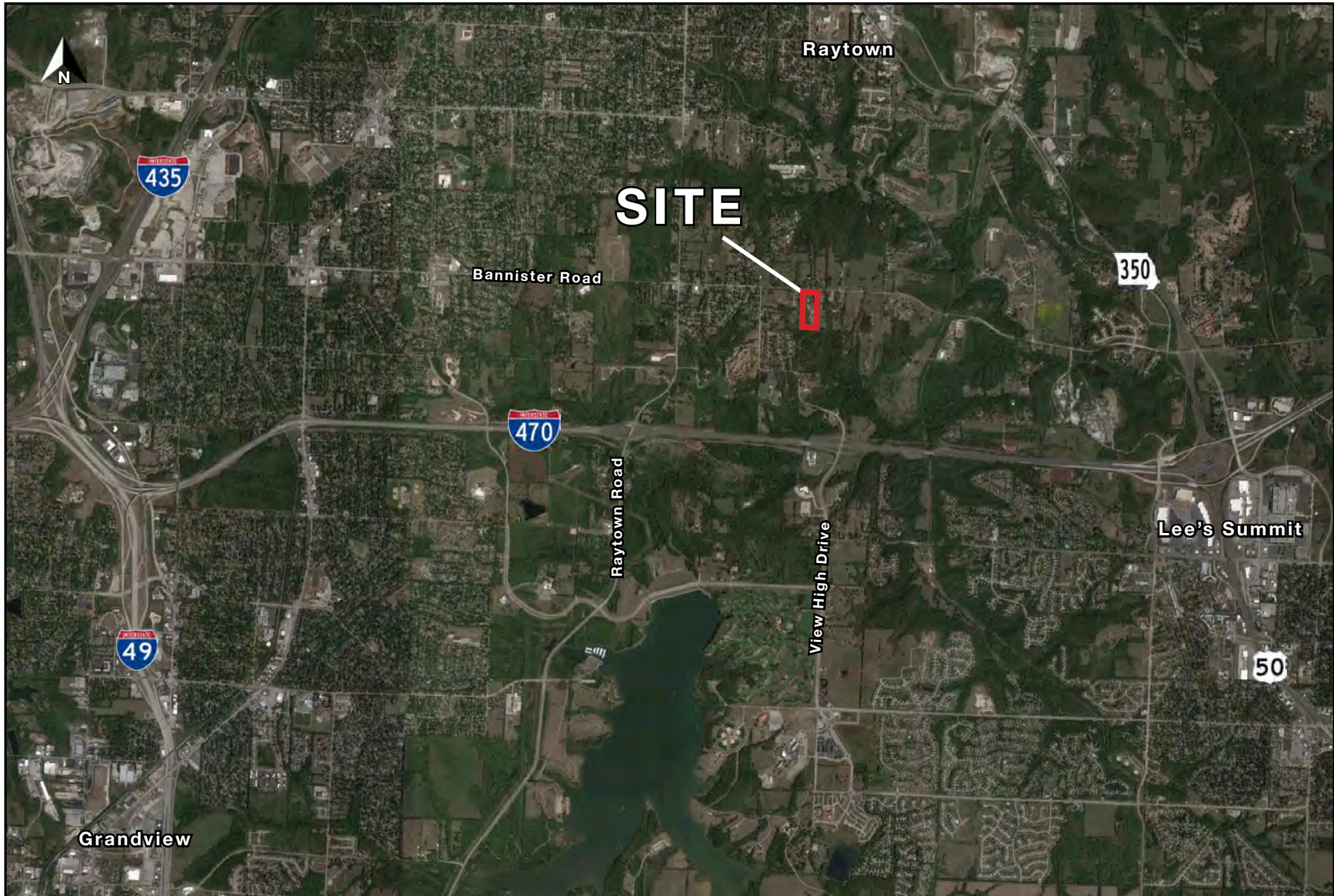




# DEVELOPMENT LAND WITH OLD FARM HOUSE

## 11209 E. Bannister Road, Kansas City, Missouri

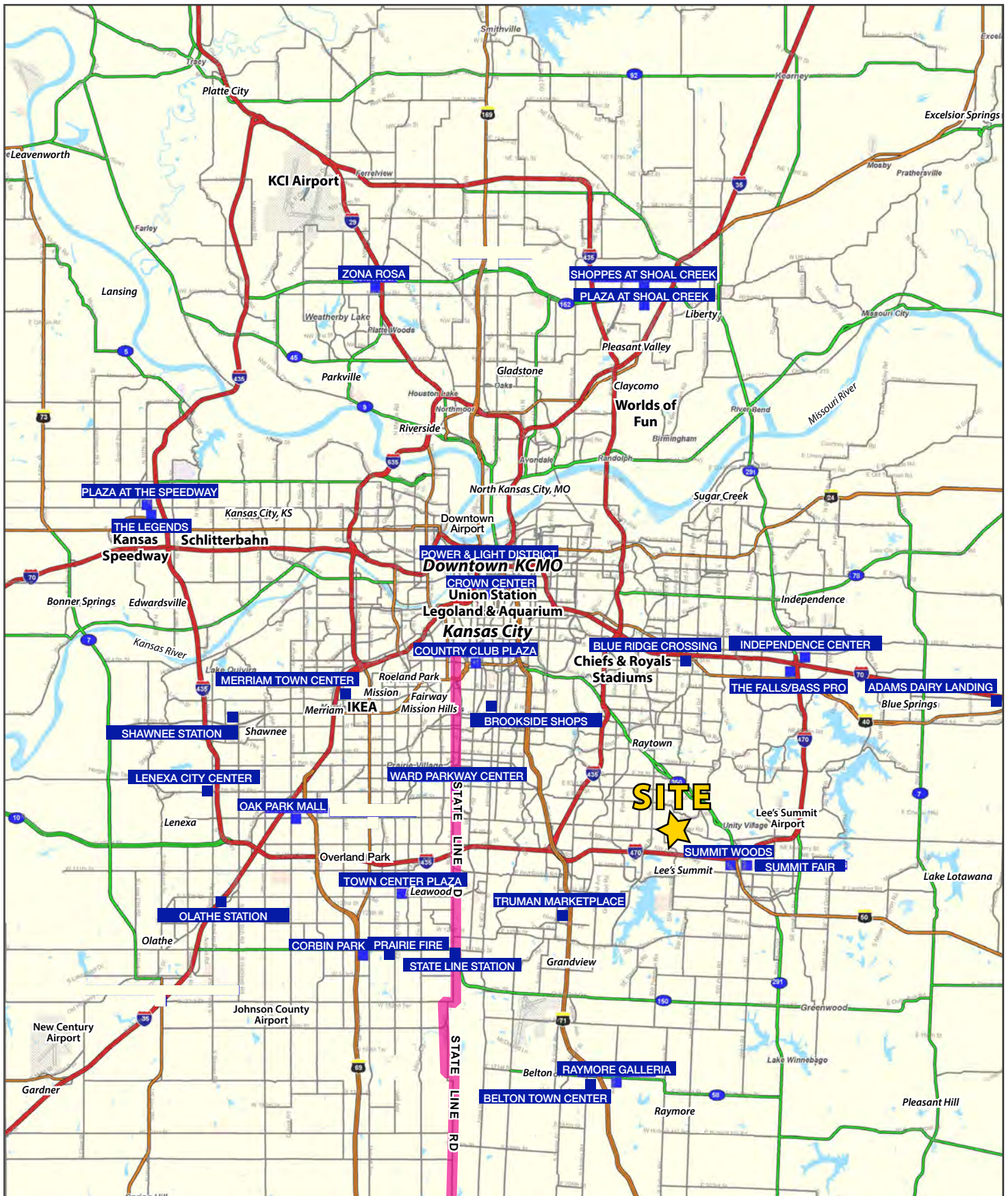
AERIAL





# DEVELOPMENT LAND WITH OLD FARM HOUSE

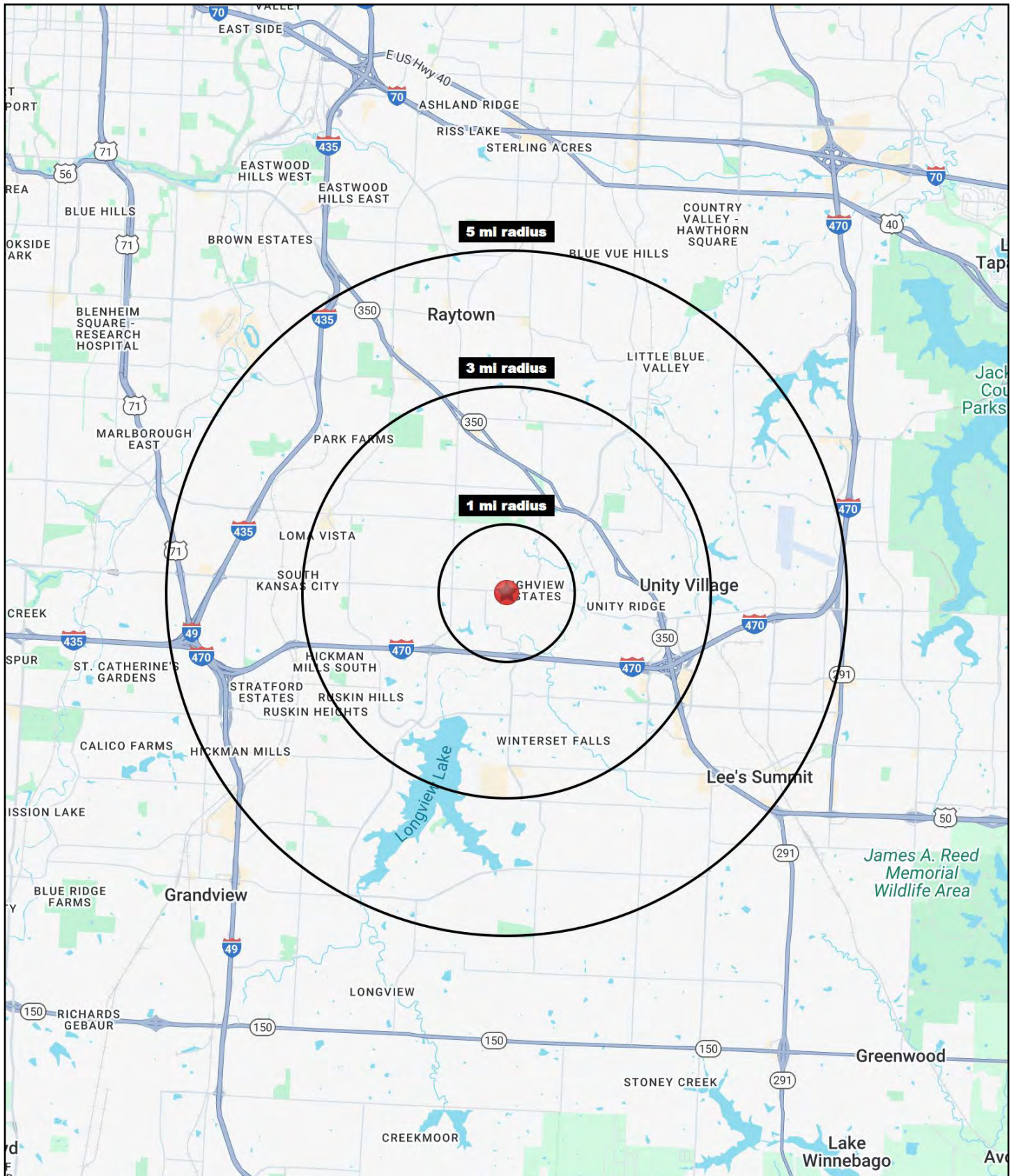
## 11209 E. Bannister Road, Kansas City, Missouri





# DEVELOPMENT LAND WITH OLD FARM HOUSE

## 11209 E. Bannister Road, Kansas City, Missouri





# DEVELOPMENT LAND WITH OLD FARM HOUSE

## 11209 E. Bannister Road, Kansas City, Missouri

11209 E. Bannister Road Kansas City, MO 64134	1 mi radius	3 mi radius	5 mi radius
<b>Population</b>			
2024 Estimated Population	1,578	40,644	118,198
2029 Projected Population	1,579	41,766	119,888
2020 Census Population	1,473	40,868	118,716
2010 Census Population	1,440	37,918	113,087
Projected Annual Growth 2024 to 2029	-	0.6%	0.3%
Historical Annual Growth 2010 to 2024	0.7%	0.5%	0.3%
2024 Median Age	37.8	40.1	38.9
<b>Households</b>			
2024 Estimated Households	658	16,569	49,262
2029 Projected Households	656	16,934	49,756
2020 Census Households	632	16,155	48,139
2010 Census Households	607	14,743	45,335
Projected Annual Growth 2024 to 2029	-	0.4%	0.2%
Historical Annual Growth 2010 to 2024	0.6%	0.9%	0.6%
<b>Race and Ethnicity</b>			
2024 Estimated White	51.7%	54.5%	56.7%
2024 Estimated Black or African American	37.8%	36.0%	33.4%
2024 Estimated Asian or Pacific Islander	2.9%	2.3%	2.0%
2024 Estimated American Indian or Native Alaskan	0.3%	0.3%	0.3%
2024 Estimated Other Races	7.3%	6.9%	7.6%
2024 Estimated Hispanic	4.7%	5.9%	6.6%
<b>Income</b>			
2024 Estimated Average Household Income	\$110,864	\$99,180	\$93,761
2024 Estimated Median Household Income	\$80,039	\$73,861	\$72,279
2024 Estimated Per Capita Income	\$46,412	\$40,504	\$39,139
<b>Education (Age 25+)</b>			
2024 Estimated Elementary (Grade Level 0 to 8)	0.8%	1.9%	2.0%
2024 Estimated Some High School (Grade Level 9 to 11)	6.5%	4.3%	3.9%
2024 Estimated High School Graduate	21.6%	27.2%	28.1%
2024 Estimated Some College	21.1%	26.0%	24.0%
2024 Estimated Associates Degree Only	9.8%	8.7%	9.2%
2024 Estimated Bachelors Degree Only	29.4%	20.4%	21.1%
2024 Estimated Graduate Degree	10.9%	11.5%	11.7%
<b>Business</b>			
2024 Estimated Total Businesses	53	1,118	4,239
2024 Estimated Total Employees	438	9,476	39,042
2024 Estimated Employee Population per Business	8.2	8.5	9.2
2024 Estimated Residential Population per Business	29.5	36.3	27.9

©2024, Sites USA, Chandler, Arizona, 480-491-1112 Demographic Source: Applied Geographic Solutions 5/2024, TIGER Geography - RS1

